

TEADIT FLUID SEALING PRODUCTS FOR SUGAR AND ETHANOL INDUSTRIES



SUGAR AND ETHANOL

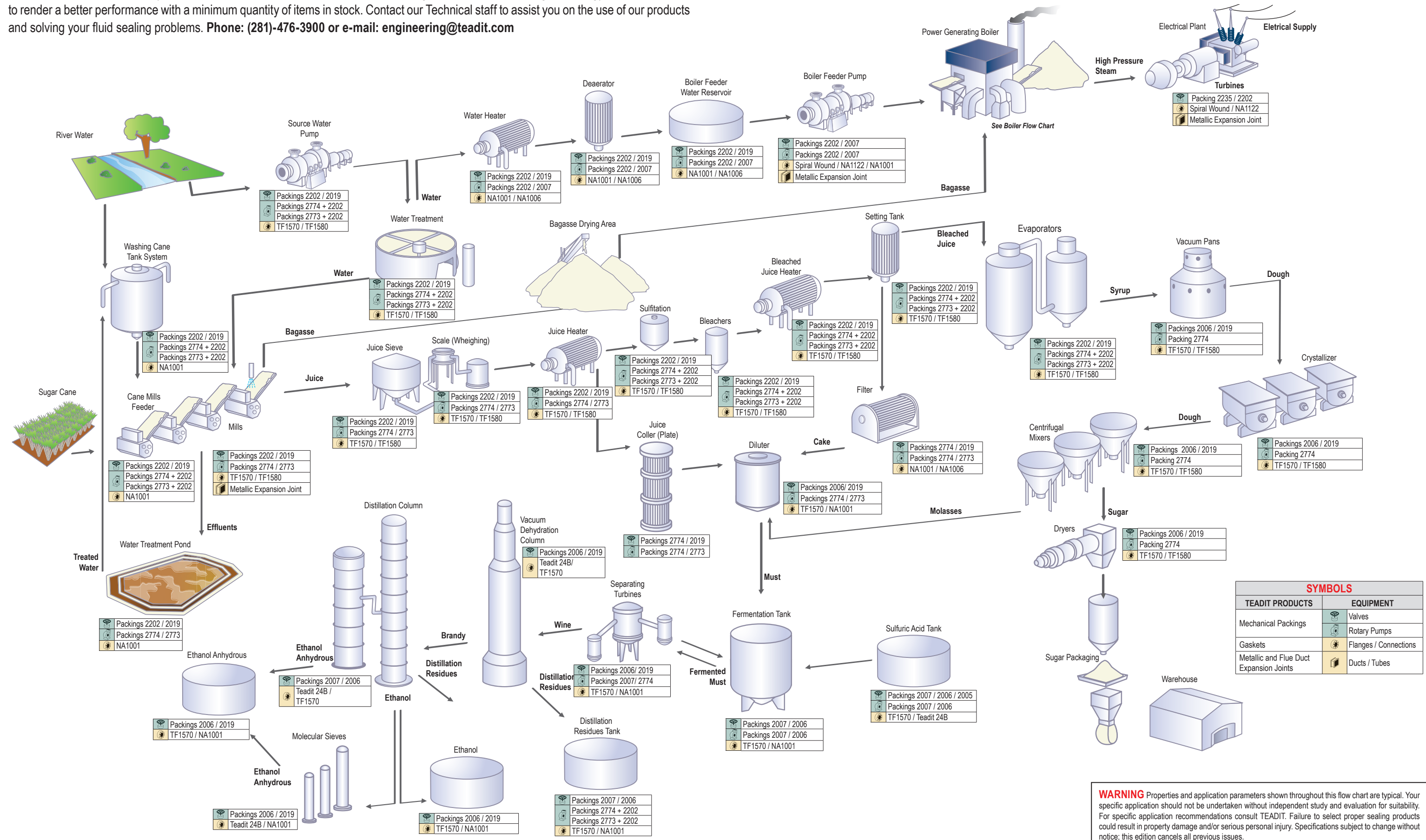
This Flow Chart for Sugar and Ethanol production will help you to select the exact TEADIT fluid sealing and thermal insulation products best suited for your specific requirements.

The recommended TEADIT products render outstanding performance thereby reducing downtime and maintenance costs.



TEADIT SEALING PRODUCTS FOR USE IN SUGAR AND ETHANOL INDUSTRIES

The products recommended by TEADIT in this Chart represent the latest worldwide generation in fluid sealing technology and are intended to render a better performance with a minimum quantity of items in stock. Contact our Technical staff to assist you on the use of our products and solving your fluid sealing problems. **Phone: (281)-476-3900 or e-mail: engineering@teadit.com**



WARNING Properties and application parameters shown throughout this flow chart are typical. Your specific application should not be undertaken without independent study and evaluation for suitability. For specific application recommendations consult TEADIT. Failure to select proper sealing products could result in property damage and/or serious personal injury. Specifications subject to change without notice; this edition cancels all previous issues.

Recommended Tedit Products Chart for Sugar and Ethanol Production

FLUIDS	EQUIPMENT	TEADIT PRODUCTS				
		Packings			Gaskets	
		Application	1 ^a option	2 ^a option	1 ^a option	2 ^a option
River Water	Source Water Pump					
River Water	Water Treatment		2202	2019	NA1001	-
River Water	Washing Cane Tank System					
River Water	Cane Mills Feeder					
Bleached Juice	Bleached Juice Heater		2774 + 2202	2773 + 2202	TF1570	TF1580
Bleached Juice	Setting Tank					
Bleached Juice	Evaporators					
Potable Water	Water Heater		2202	2019	NA1001	NA1006
Hot Potable Water	Deaerator					
Hot Potable Water	Boiler Feeder Water Reservoir		2202	2007		
Hot Potable Water	Boiler Feeder Pump		2202	2007	Spiral Wound / NA1122 / NA1006 Metallic Expansion Joints	
			2202	2007		
High Pressure Steam	Turbines		2202	-	Spiral Wound / NA1122M Metallic Expansion Joints	
Mixed Juice	Mills		2202	2019	TF1570 / TF1580 Metallic Expansion Joints	
			2774	2773		
Mixed Juice	Juice Sieve		2202	2019	TF1570	TF1580
Mixed Juice	Scale (Weighing)					
Mixed Juice	Juice Heater		2774	2773		
Effluents	Water Treatment Pond					
Mixed Juice	Sulfitation		2202	2019	TF1570	TF1580
Sulfited Juice	Bleachers		2774 + 2202	2773 + 2202		
Syrup	Vacuum Pans		2006	2019	TF1570	TF1580
Dough	Crystallizer					
Dough	Centrifugal Mixers		2774	2006		
Sugar	Dryers					
Slurry	Filter		2774	2019	NA1001	NA1006
			2774	2773		
Sulfuric Acid	Sulfuric Acid Tank		2007	2006 / 2005	TF1570	Tedit® 24B
			2007	2006		
Molasses	Diluter		2006	2019	TF1570	NA1001
			2774	2773		
Must	Fermentation Tank		2007	2006	TF1570	NA1001
Fermented Must	Separating Turbines		2006	2019	TF1570	NA1001
			2007	2774		
Mixed Juice	Juice Cooler (Plate)		2774	2019	-	-
			2774	2773		
Brandy	Distillation Column		2007	2006	Tedit® 24B	TF1570
Ethanol	Molecular Sieves		2006	2019	Tedit® 24B	NA1001
Distillation Residues	Distillation Residues Tank		2007	2006	TF1570	NA1001
			2774 + 2202	2773 + 2202		
Wine	Vacuum Dehydration Column		2006	2019	Tedit® 24B	TF1570
Ethanol / Anhydrous Ethanol	Ethanol Reservoir		2006	2019	TF1570	NA1001

Symbol: Rotary Pumps Valves

REMARKS

1 - For each application the specification was done for two styles of products. The first one considers economic choice and the second one considers the better performance; 2 - For packing installation procedure instructions please see the FSA/ESA Pumps and Valve Packing Installation Procedure; 3 - For gasket installation please see the FSA/ESA Gasket Installation Procedure.

Oct/17